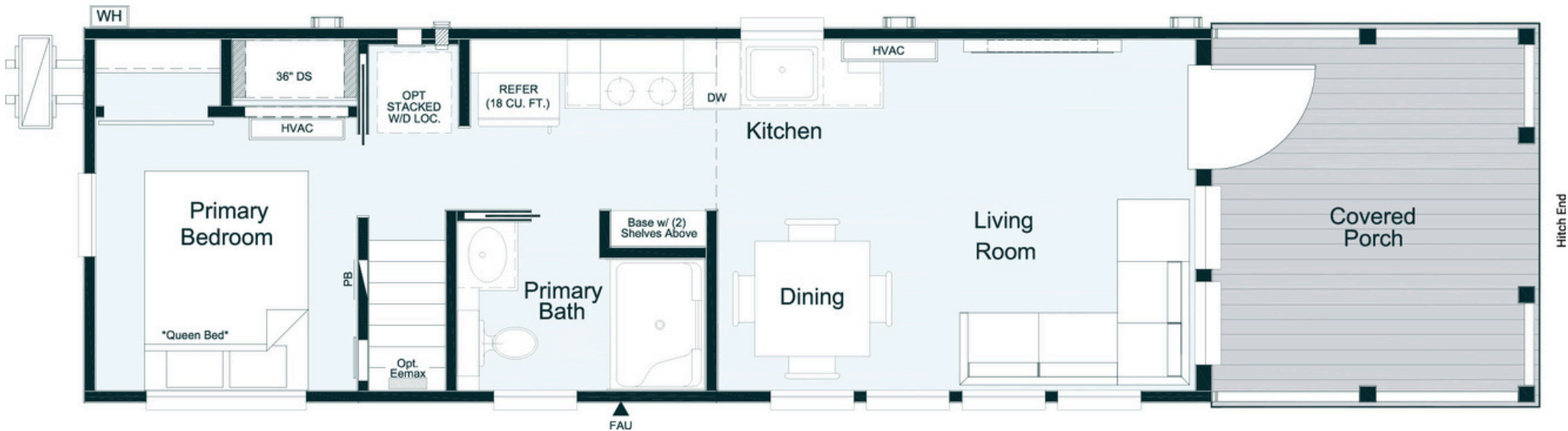
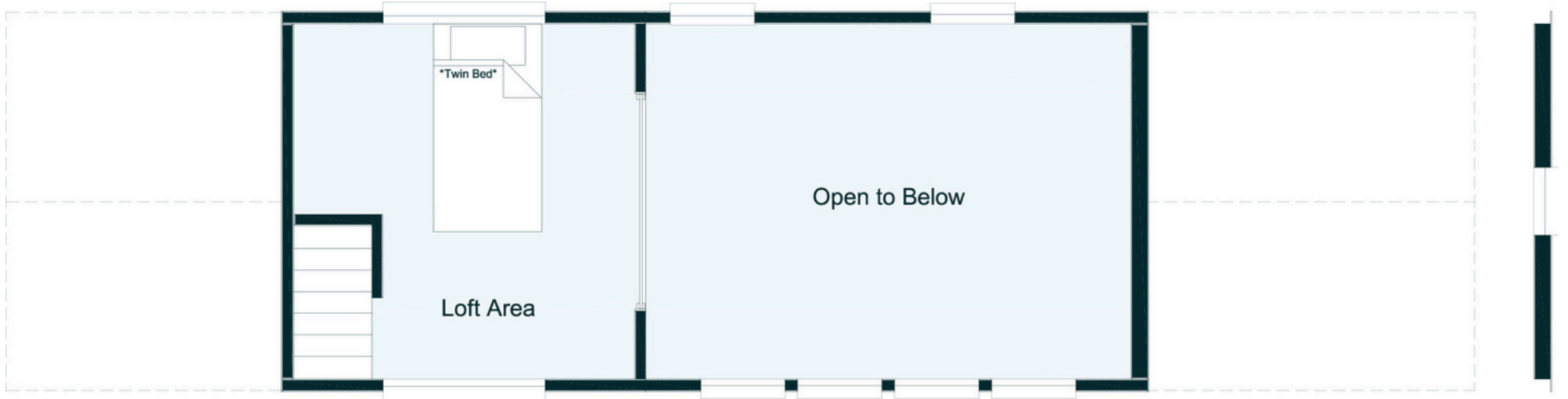


Coldwater

395 Sq. Ft. / 12x45



The home series, floor plans, photos, renderings, specifications, features, pricing, materials and availability shown will vary by retailer and state, and are subject to change without notice. Some standard features are model-specific. Contact your sales representative for more information.

Standard Features

Exterior

- 12" Steel I-Beam Frame with Full Extension Outriggers
- Detachable Hitch
- 2"x6" Floor Joist and 2"x4" Sidewall Construction - 16" O.C.
- 23/32" Tongue & Groove Sub floor
- Composite Porch Decking with Covered Porch (Per Print)
- High Density Woven Simplex Underbelly
- 2"x4" Interior Wall Construction - 16" O.C.
- 2"x6" Rafters - 16" O.C. (Per Print)
- 8/12 Roof Pitch Available with Lofts (Per Print 12' Wide Only)
- (1) Exterior Frost Proof Faucet
- (3) Tie Down Brackets Each Side
- Galvalume Metal Roofing
- Hardie Fiber Cement Siding
- Energy Saving 7/16" OSB & House Wrap*
- 4/4" Residential Trim
- 36"x80" Residential Outswing Full View Door w/ Blinds
- Front and Rear Residential Eaves with Boxed Overhangs
- Black Powder Coated Steel Porch Railing

Kitchen

- Samsung® Stainless 30" Electric Smooth Top Range
- Samsung® Stainless 30" Microwave/Vent Hood
- Samsung® Stainless 18 cu. ft. French Door Refrigerator
- Fire Extinguisher Included
- Wood Cabinetry and Stiles
- Soft Close Hardware on Cabinets and Drawers Throughout
- Designer Cabinet Pulls
- Stainless Steel Single Bowl Deep Kitchen Sink
- High Pressure Laminate Countertops w/ Rolled Edging
- Single Lever Spring Faucet
- Lighting under Kitchen Cabinets
- Ceramic Tile Backsplash Throughout Kitchen

Interior

- 1/2" Finished Sheetrock Walls Throughout
- White-Wash Stained Pine Ceiling
- 90" Sidewall Height with Extra High Vaulted Ceiling (Per Print)
- Wood Interior Doors
- LVP Luxury Vinyl Plank
- 2" Window Blinds
- Dual Pane Low-E Efficient Windows*
- Fiberglass Batten Insulation: R-13 Walls-R-13 Roof-R-22 Floor*
- 100 Amp Panel Box
- (2) Exterior GFI Receptes
- (2) BRK Smoke / Carbon Dioxide Detectors
- PEX Plumbing Water Lines
- Rinnai® Tankless On Demand Gas Water Heater w/ Cover
- 20,000 BTU Outside Condenser
- 9,000 BTU Air Handler in Living Room and Bedroom
- Water Shut Off Valves Throughout
- Ground Fault Breakers in all Wet Areas
- LED Can Lighting Throughout
- Ceiling Fan w/Downrod in Living Room and Bedroom Per Print

Bedrooms & Bathroom

- 54" 1 Piece White Fiberglass Tub/Shower
- (1) Exhaust Fan
- Porcelain Elongated Residential Toilet
- Decorative Oval Mirror
- Solid Closet Shelving and Double Hanging Rod
- Ceiling Fan w/ Downrod
- White Porcelain Sink w/ Metal Lav Faucet
- 36" Built-in Drawers in Bedroom
- Barn Door w/ Hardware in Bedroom

Popular Options

- Dishwasher
- Washer Dryer
- Quartz Countertops
- Acrylic Shower
- Electric Fireplace

\$158,294